



INSIDE THIS ISSUE

- Report of our annual meeting
- Discover our flyers and poster about biobanks
- Have a look at the new website
- And much more...



On October 3rd, we celebrated the 10th anniversary of BBMRI.be in Hof Van Liere in Antwerp. Many thanks to all attendees of the meeting for making this event a true success!

We are looking forward to continue our collaboration with all of you for the next 10 years of BBMRI.be!

Find out more about our annual meeting on page 3



STRENGTHENING BIOBANKS
AND BIOREPOSITORIES
Collaborative approaches
for a sustainable future

The registrations for EBW24, hosted by BBMRI-ERIC and ESBB, are officially open! This year's overarching theme is 'Strengthening Biobanks and Biorepositories: Collaborative Approaches for a Sustainable Future.'

We invite you to explore the preliminary program and contribute by submitting your abstract for a poster or presentation [here](#). We eagerly anticipate your participation at EBW24.



Are you looking for the missing piece of your research?

Our biobanks might have the samples & data you need.



Meet our biobank partners

DOWNLOAD OUR FLYER HERE

“ Are you looking for samples/data/advice? ”



Research idea but no samples to test it on?



Should the samples you are collecting be registered in a biobank?

! Some questions on the Belgian Biobank Legislation?



Support needed from our biobanks to store your samples or to register your biobank?



Looking for a research partner for health research projects?



Find all these answers and more on our website: www.bbmri.be

Take a look at the communication material on biobanks **BBMRI.be** developed with and for our different stakeholder groups.

Check out our new stakeholder-oriented website for more detailed information: www.bbmri.be.



Want to make a difference in research?

Your tissue and blood samples might just be the missing piece.

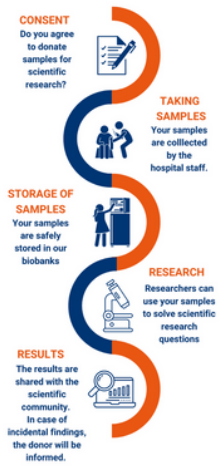


Meet our biobank partners

DOWNLOAD OUR FLYER HERE
[FR](#) [ENG](#) [NL](#)

“ Do you want to know what happens with your samples? ”

Biobank flow
What happens with my samples?



What is a biobank? Which samples are collected? For which research will my samples be used?
Find all these answers and more on our website: www.bbmri.be

Other questions? Mail to: secretariat.BBMRIbe@kankerregister.org



On October 3rd, we celebrated **the 10th anniversary of BBMRI.be**.

In the morning sessions, we took a glance at the past and glimpse of the future together with the Director General of BBMRI-ERIC and all the (past)-Presidents of BBMRI.be.

In the afternoon, two parallel workshops were organized. One workshop focused on strengthening the bounds between the different health infrastructures in the Belgian landscape.

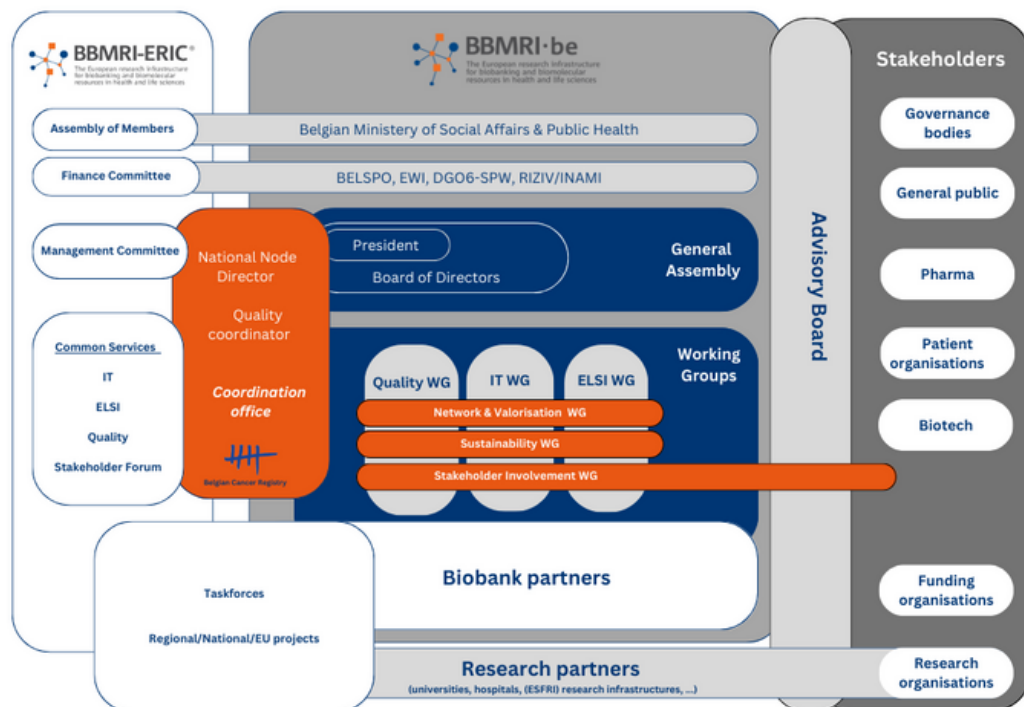
In the second workshop, BBMRI.be members participating in our B3-ISO Quality improvement project were introduced by our Quality experts in the wondrous world of Process Mapping and Risk Analysis.



Check out the [full report here](#)

We are delighted to share that the term of **our current President, Elke Smits**, has been extended by two years. Alongside the President, all **Board members and (co)chairs of the Working Groups** have also **committed to continuing their roles within BBMRI.be for the next two years.**

To facilitate a more seamless integration of all stakeholders and to align more effectively with BBMRI-ERIC and other research partners, the Board of Directors has developed **a new governance structure for BBMRI.be.**



Find out more about our [governance structure here](#)

Access the canSERV Open Call webinar recording now!

On December 1, BBMRI-ERIC hosted a webinar for the canSERV project, which focuses on delivering over 400 cutting-edge and customized cancer research services. The recorded webinar is now accessible as a [podcast](#) or [YouTube video](#). Explore the project and submit your application to the Open Call by visiting the [canSERV website](#).



NEWS

More BBMRI-ERIC news? Check out the latest BBMRI-ERIC newsletter [here](#)

The recently launched **Federated Platform of BBMRI-ERIC** is now accessible, enabling researchers to explore biobanks and biomolecular resources using metadata. This encompasses comprehensive details about donors, accessible data and samples, and the ability to construct virtual cohorts. Learn more about the capabilities of the Federated Platform [here](#).



**BBMRI.BE
WISHES YOU ALL A**

**HAPPY
HOLIDAY**



BBMRI.be

secretariat.BBMRIbe@kankerregister.org

www.bbmri.be

Follow us on [LinkedIn](#)

[Subscribe to the newsletter/ Unsubscribe for this newsletter](#)